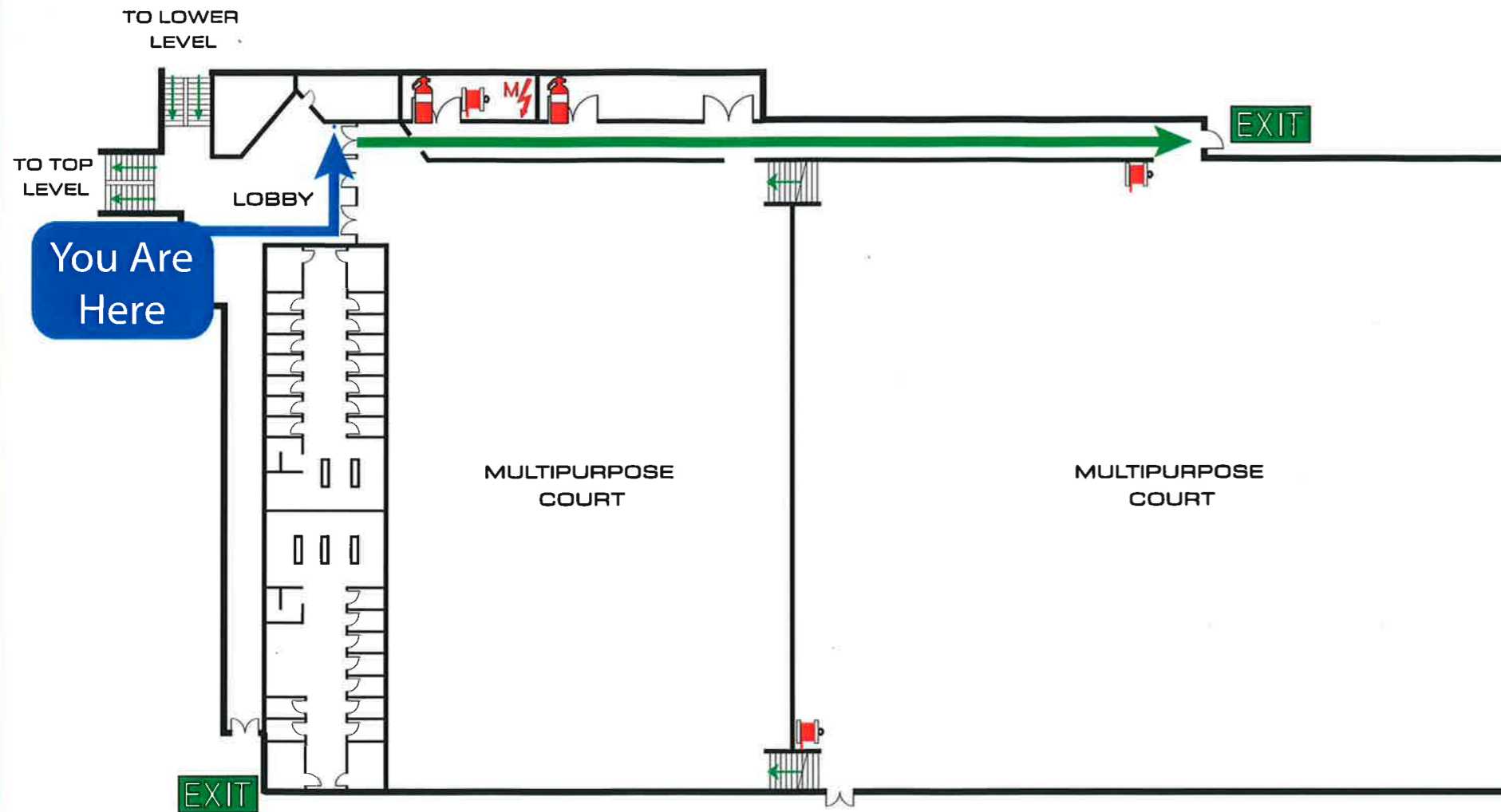


EMERGENCY EVACUATION DIAGRAM

DATE ISSUED: 15/04/2019

VALID AS AT: 15/04/2024

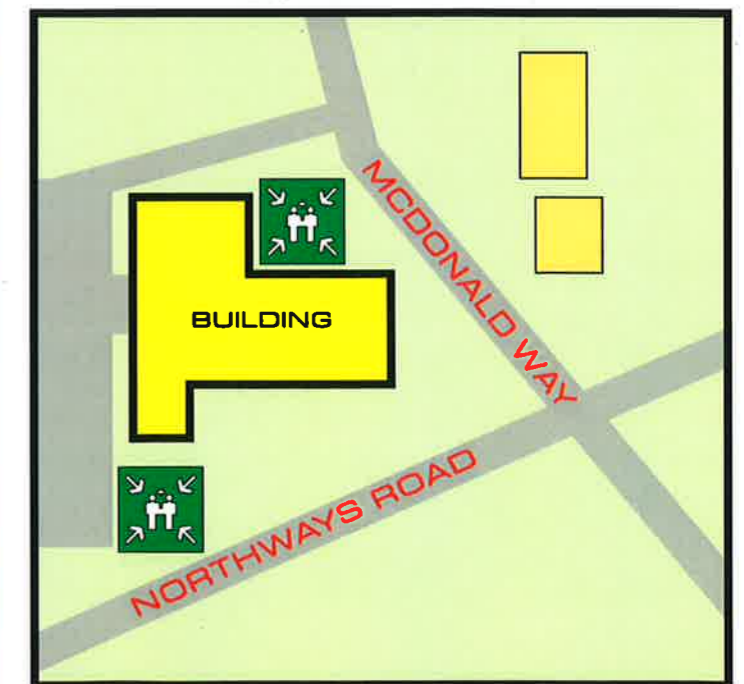
IN CASE OF EMERGENCY
FIRE / POLICE / AMBULANCE
CALL 000



LEGEND

- | | |
|----------------------------------|---|
| CO ₂ extinguisher | Main switchboard |
| Water extinguisher | Emergency exit |
| Dry chemical powder extinguisher | Emergency exit this way |
| Foam extinguisher | First aid kit |
| Wet chemical extinguisher | Assembly Area |
| Vapourising liquid extinguisher | Refuges Point |
| Fire hose reel | Fire indicator panel |
| Fire blanket | Emergency Warning and Intercommunication System |
| Fire hydrant | Emergency phone (WIP) |

SITE PLAN



LATROBE LEISURE CHURCHILL
NORTHWAYS ROAD & MCDONALD WAY, CHURCHILL VIC 3842



IN CASE OF A FIRE

- R**EMOVE PEOPLE IF IN DANGER TO THE ASSEMBLY AREA
- A**LERT OTHERS - RAISE THE ALARM RESIDENTS AND MEMBERS OF THE PUBLIC
- C**ONFINE FIRE AND SMOKE CLOSE ALL WINDOWS AND DOORS (IF SAFE TO DO SO)
- E**VACUATE TO ASSEMBLY AREA REMAIN AT ASSEMBLY AREA (IF SAFE TO DO SO)

EVACUATION PROCEDURES

1. REMAIN CALM. DO NOT PANIC
2. LEAVE BUILDING BY DESIGNATED EXIT OR NEAREST SAFE EXIT
3. PROCEED TO THE NEAREST ASSEMBLY AREA (SEE MAP). OR AS DIRECTED BY STAFF/EMERGENCY SERVICES
4. REMAIN AT ASSEMBLY AREA UNTIL OTHERWISE DIRECTED BY STAFF/ EMERGENCY SERVICES.

FIRE EXTINGUISHER OPERATION

- STAY BACK FROM FIRE 2-3 METRES
- CHECK PRESSURE GAUGE
- ENSURE DOOR OR CLEAR EXIT PATH IS DIRECTLY BEHIND YOU
- USE THE PASS METHOD
- P**ULL PIN
- A**IM AT EDGE OF FIRE
- S**QUEEZE THE HANDLE
- S**WEEP THE FIRE

FOCUS FIRE & SAFETY MEMBER OF



FOCUS ALLIANCE

PHONE: 9854 7300

