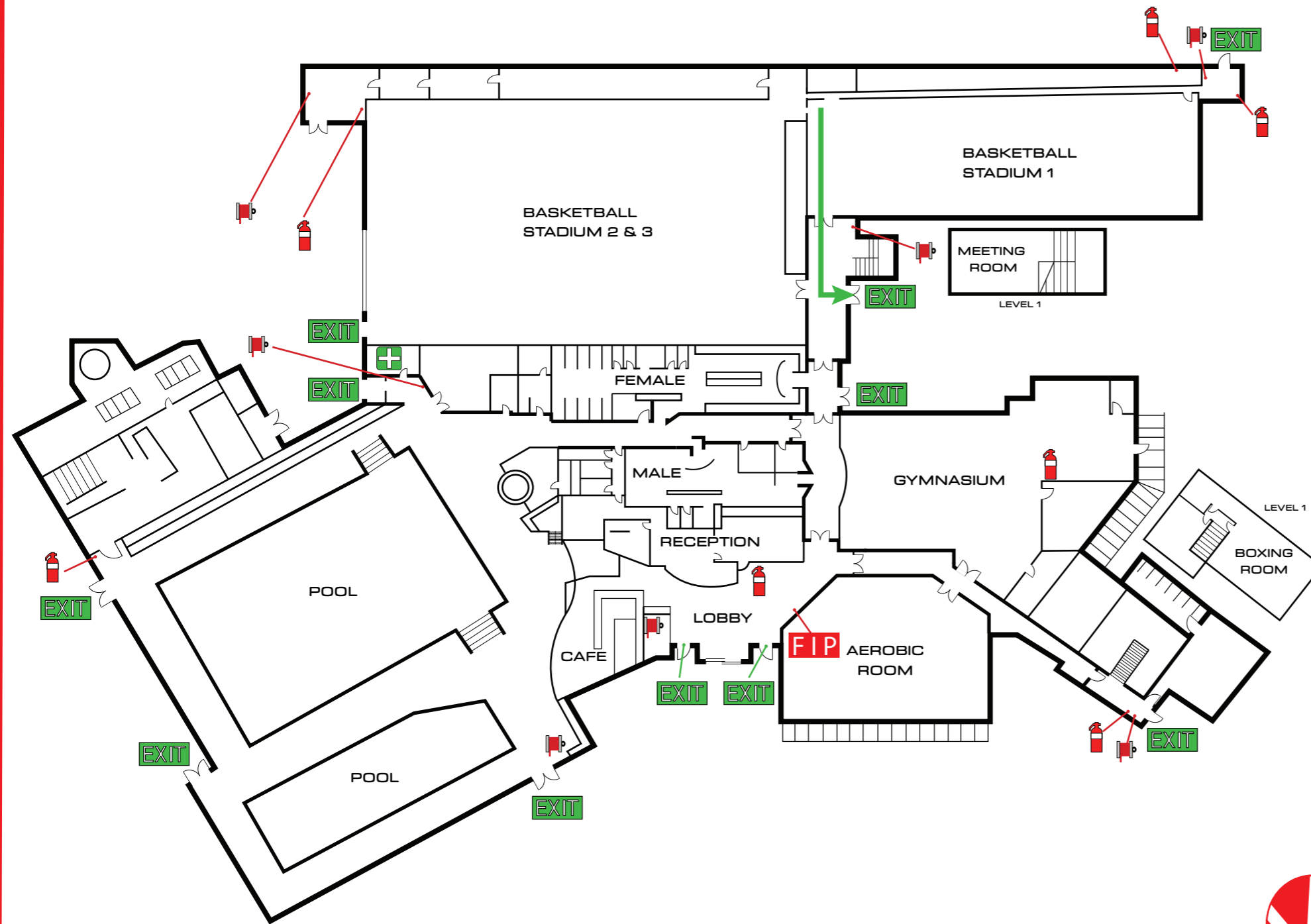


EMERGENCY EVACUATION DIAGRAM

DATE ISSUED: 22/02/2019 VALID AS AT: 21/02/2024

**IN CASE OF EMERGENCY
FIRE / POLICE / AMBULANCE
CALL 000**

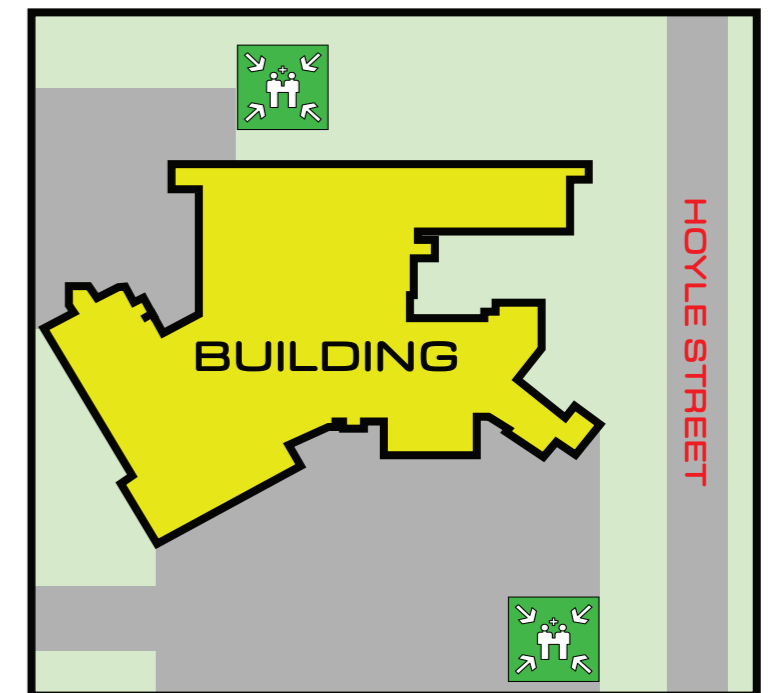


**LATROBE LEISURE MORWELL
33-43 MCDONALD STREET, MORWELL**

LEGEND

- | | | | |
|--|----------------------------------|--|---|
| | CO ₂ extinguisher | | Main switchboard |
| | Water extinguisher | | Emergency exit |
| | Dry chemical powder extinguisher | | Emergency exit this way |
| | Foam extinguisher | | First aid kit |
| | Wet chemical extinguisher | | Assembly Area |
| | Vapourising liquid extinguisher | | Refuges Point |
| | Fire hose reel | | Fire indicator panel |
| | Fire blanket | | Emergency Warning and Intercommunication System |
| | Fire hydrant | | Emergency phone (WIP) |

SITE PLAN



- IN CASE OF A FIRE**
- R**EMOVE PEOPLE IF IN DANGER TO THE ASSEMBLY AREA
 - A**LERT OTHERS - RAISE THE ALARM RESIDENTS AND MEMBERS OF THE PUBLIC
 - C**ONFINE FIRE AND SMOKE CLOSE ALL WINDOWS AND DOORS (IF SAFE TO DO SO)
 - E**VACUATE TO ASSEMBLY AREA REMAIN AT ASSEMBLY AREA (IF SAFE TO DO SO)

- EVACUATION PROCEDURES**
1. REMAIN CALM. DO NOT PANIC
 2. LEAVE BUILDING BY DESIGNATED EXIT OR NEAREST SAFE EXIT
 3. PROCEED TO THE NEAREST ASSEMBLY AREA (SEE MAP). OR AS DIRECTED BY STAFF/EMERGENCY SERVICES
 4. REMAIN AT ASSEMBLY AREA UNTIL OTHERWISE DIRECTED BY STAFF/ EMERGENCY SERVICES.

- FIRE EXTINGUISHER OPERATION**
- STAY BACK FROM FIRE 2-3 METRES
 - CHECK PRESSURE GAUGE
 - ENSURE DOOR OR CLEAR EXIT PATH IS DIRECTLY BEHIND YOU
 - USE THE PASS METHOD
- P**ULL PIN
AIM AT EDGE OF FIRE
SQUEEZE THE HANDLE
SWEEP THE FIRE

FOCUS FIRE & SAFETY MEMBER OF



FOCUS ALLIANCE

PHONE: 9854 7300

